

PROFInyheter

PROFInyheter 58 September 2024
in english translation

See PDF-version at se.profibus.com

PI Sweden

PI Sweden is now officially the organisation for Finland



In the (temporary?) lack of a Finnish PROFIBUS/PROFINET organization in Finland PI Sweden includes Finland in its area of operation.

Users of Profibus/Profinet/IO-Link/Omlox as well as all current and former member companies in Profibus Finland can now turn to PI Sweden with their questions and if they need help or management of membership, product presentations, certification, etc

Contact:.

PI Sweden
[SWEDEN - se.profibus.com](https://se.profibus.com)
kansli@profibus.se
+46 (0)72-541 67 10

Lars H Larsson chairman PI Sweden



PI Sweden will exhibit at Scanautomatic-2024 in Gothenburg on October 8-10.

We are in stand B 00:41 where we show our technologies and some of our member companies show and talk about their products and solutions.

Our competence centers, PICC, and training centers, PITC, are also on site in the stand.

See our ads in the magazine Automation and Process Nordic:

PROFI BUS **PI PROFIBUS · PROFINET** **PROFI NET**

PI Sweden vi kan kommunikation

IO-Link **MTP** **omlox** **NOA** **SRCI**

PROFINet PROFInergy PROFInet PROFInet

Vi ses på Scanautomatic

8-10 OCTOBER 2024 SVENSKA MÄSSAN GÖTEBORG

PI Sweden Monter B 00:41

scan automatic

Våra medlemmar

ABB **ADEPTOR** **airtec** **AmbientTechnomancy** **ASSA ABLOY** Entrance Systems

Atlas Copco **BLH NOBEL** A VPG Brand **CAJO** **DATALOGIC** **emotron** DEDICATED DRIVE A CG Product **H&D Wireless**

hms **INOR** **LEINE LINDE** **Malthé Winje** Automation AB **MIMES** **MOBILARIS** Industrial Solutions

PENTRONIC **PHENIX CONTACT** **piab** **robot system products** **RT-LABS** **WESTERMO**

You can find our stand easily as it is located along the south wall in hall B directly inside the entrance.

Sit down at a table, get some fruit and drinks and take the opportunity to learn more about industrial communication, industry 4.0, how IT and OT can be brought together in a safe way.

Learn more about the new technologies in our organization: MTP, omlox, NOA and SRCI.

scan automatic

[Get your ticket here>>](#)

International news

SRCI – Standard Robot Command Interface

SRCI is an open standard for programming and operating robots in a PLC environment. It enables standardized programming and operation of industrial and collaborative robots, regardless of the PLC or robot manufacturer. SRCI accomplishes this by standardizing the communication between the robot controller and the PLC.

SRCI is the next step in the evolution of the robotics market.

In practice, SRCI provides robot commands as function blocks within the PLC programming engineering tool. This means that customers can program their entire machine, including the robot program, in the same development environment. In addition, SRCI-based systems allow the user to create their own customized operator screens, which greatly improves the user experience for both operators and maintenance personnel.

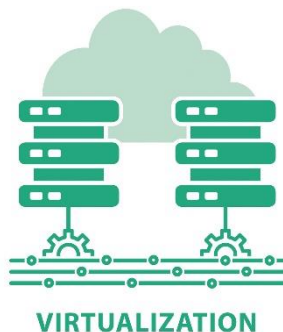
[Read more:](#)



PROFINET Certification of Virtual Controller and Device Instances

Virtual controllers and devices are a perfect example of the IT/OT convergence which plays a decisive role for PROFINET in automation technology. With the technical advancements being made in virtualization technology and the growing demand for virtual controllers and devices, PROFIBUS & PROFINET International (PI) has adapted the PROFINET certification process accordingly and reached an important milestone with the PROFINET Test Bundle V2.45.0 released in August of 2024. Virtual controller and device instances can be officially tested and certified effective immediately. PROFIsafe can also be used in a virtual context as already confirmed by TÜV Süd with a letter of conformance.

[Read more:](#)



PROFINETS up to number 240

As an e-mail newsletter, PROFINETS is published once a month. As an APP, it is constantly updated with current news.

What's Really Behind the IT/OT Divide

IT / OT convergence is here to stay whether we like it or not, and there have been lots of articles about how to deal with convergence. But a division still exists. Luckily, we have the technology to put the debate to rest...

[Read more:](#)



MTP makes "Plug & Operate" accessible

The key to faster and more flexible responses to changing market requirements is the use of modular systems. MTP (Module Type Package) plays an important role here. At the ACHEMA trade show, a new MTP logo was released along with a multi-vendor demonstration.

[Read more:](#)

Recap: ACHEMA Show with PROFINET PA Live Demo

There were many new exciting announcements from PI at this year's ACHEMA trade show. A particular highlight was the PI's new process automation live demo wall featuring 68 devices from 19 different companies. The focus was on intrinsically safe PROFINET over APL.

[Read more:](#)



PROFINET Security Class 1 – Ready for Prime Time

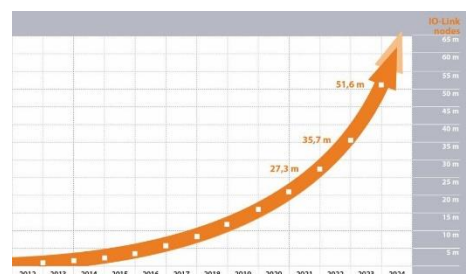
With security top of mind these days, PI is proactively improving PROFINET networks with a staged approach that ensures not only a secure OT network, but one that doesn't compromise performance or reliability. The first stage of this approach, Security Class 1, is now ready for prime time.

[Read more:](#)

IO-Link: A Key to the Future of Automation

The numbers speak for themselves. The IO-Link standard has taken the market by storm. Joachim Uffelmann, Head of the Steering Committee for the IO-Link Community, explains the significance behind this success.

[Read more:](#)



New Events and Products

Helmholz SPE-Switch from Adeptor

SPE (Single Pair Ethernet) is entering the market. It opens up new possibilities in Ethernet.

Helmholz is launching its first switch for SPE this autumn.

SPE can handle distances of up to 1000 meters and with PoDL (Power over Data Line) power supply and data can be sent on a common wire pair.

Feel free to contact us about this or other products in our portfolio. Or visit us in stand B05:70 at Scanautomatic.

ADEPTOR

MXb/QXb electric actuator with Profibus from PMV Automation

Limitorque introduces its electric actuator MXb / QXb with Profibus communication and Fail Safe function.

This design is a combination of the best of both worlds. Very reliable electric actuator with Profibus communication, advanced diagnostics and Fail Safe function with spring.

[Läs mer.](#)



The logo for Flowserve, featuring the word "FLOWSERVE" in red capital letters with a red curved line above and below it.

Are you a member of PI Sweden?

Is your company a member? If not, click [here](#) and register.

As a member you have great advantages.

If you have products or services for PROFIBUS/PROFINET, you can present your company and your products on our website and in the international product guide.

Do you want technical documentation, you get a login and a password for the international website download page.

You can find more news about PROFINET, PROFIBUS, IO-Link and more at SE.profibus.com and in [PROFInews](#)

PI Sweden