

# PROFInyheter

PROFInyheter 59 december 2024

Se PDF-version på [se.profibus.com](https://se.profibus.com)

## PI Sweden

**Our booth directly at the entrance at Scanautomatic-2024 in Gothenburg on October 8-10**

Scanautomatic, the Nordic region's premier meeting place for industrial automation, once again gathered many relevant exhibitors and many interested visitors.

Several of our member companies exhibited at our booth and were there to provide information about all the technology that PI covers.

Not only PROFINET and PROFIBUS but also IO-Link, MTP, SRCI-Robotics and all solutions for Ethernet: SPE, APL, TSN and much more.

We had a good location and exposure so many people found their way to our booth.



## International News

**SPS 2024, Europe's leading trade fair for smart production and automation**

PI celebrated 35 years as an organization. At the SPS trade fair in Nuremberg in November, we showed the breadth of our technologies.

It is the most important trade fair for automation and industrial communication of the year, and with fewer exhibitors but more visitors than before, PI's stand was more visited.

With lectures, live demonstrations and many member companies showing their products, we demonstrated that we are the world's leading organization for industrial communication and automation.

[Read more.](#)



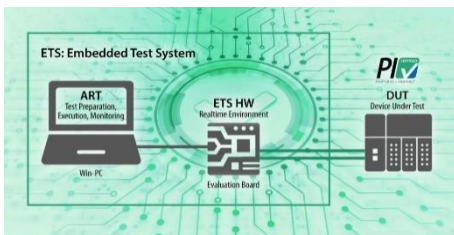
## PROFINETS up to issue 243

As an email newsletter, PROFINETS is published once a month. As an APP, it is constantly updated with current news.

### PROFINET: Continuous Innovation and Highest Quality

PROFINET is a dynamic standard driven by an active community. New versions bring more features annually. In fact, I would be more concerned if our customers or community ran out of ideas for further development.

[Läs mer:](#)



### New Test and Simplifications for PROFINET Tester

PROFINET users rely on the high quality and interoperability of devices used in their systems. Device manufacturers would like to have a flexibly implementable testing system offering easy and comprehensible operation. This is why PI is continuing to invest heavily to develop the PROFINET Tester –ensuring high quality for users and ease-of-use for device manufacturers.

[Läs mer](#)

### New PI Training Center in Sweden

Congratulations to HMS Networks for becoming the latest PI Training Center in Sweden. Located in Halmstad, Sweden, they are now certified to provide both PROFIBUS and PROFINET training.

[Läs mer.](#)



### IO-Link Interop 2024 – More than “Just” a Platform for Testing

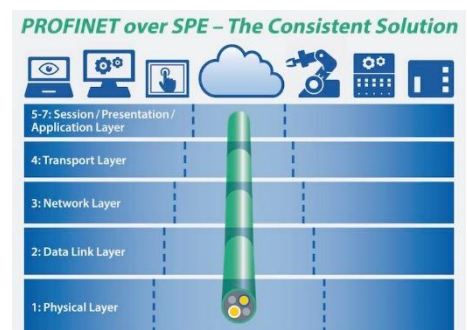
The IO-Link Interoperability Workshop at the beginning of October 2024 was extremely well attended and tested a wide range of devices. But that's not all...

[Läs mer](#)

### A Standardized Plug System for PROFINET over SPE

At the PI press conference at the SPS trade fair, a mating face for Single Pair Ethernet (SPE) connectors was announced. PI Working Groups have put forth a concept based on the hybrid IEC 63171-7 plug variant which will be adapted for IP20 and IP65 (M8 and M12).

[Läs mer.](#)



## New Events and Products

### HMS Industrial Networks AB is now a certified PI Training Center for both PROFIBUS and PROFINET Installer and Engineer Training.

Pictured are Hassan Kaghazchi from PI Ireland and Kent Andersson from HMS, after the audit. There are many courses available for PROFIBUS or PROFINET Installer, Troubleshooting and Maintenance and Engineering starting on January 27<sup>th</sup>. For a complete list see [profibus.com](http://profibus.com) under Training, select country Sweden, or at [hms-networks.com](http://hms-networks.com). In addition to scheduled courses, we offer to come to you and hold the training at a suitable location near you, contact us for more information at [info@hms-networks.com](mailto:info@hms-networks.com)



### New multi-channel instrument for industrial weighing and force measurement with PROFINET from BLH Nobel

BLH Nobel has now launched the next generation of multi-channel instruments for industrial weighing and force measurement. The instrument, the G6, is PROFINET certified and builds on the experience of the previous G4, which has been used in demanding environments for more than 20 years.

The G6 uses modern technology for improved performance and versatility. The instrument is easy to install and use, with a design that can withstand the rigors of industrial environments.

The G6 has a modular design that supports up to 8 fast input channels and comes with versatile software that can be adapted to different needs. It can handle everything from basic weighing to complex force measurement, motion monitoring and diagnostics. The configuration can be easily changed to meet new requirements. [Read more.](#)

**BLH NOBEL**  
A VPG Brand



## Troubleshoot and monitor Industrial Ethernet networks with Atlas from Adeptor

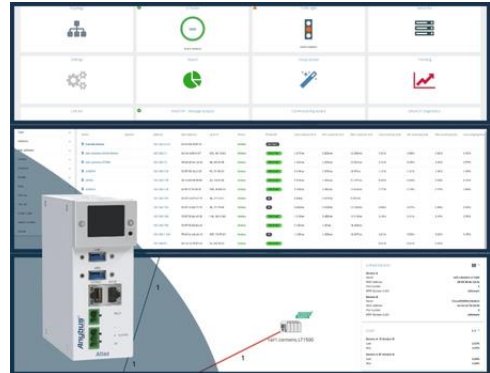
Understanding the traffic in your process network is crucial for efficient operation and maintenance. To get a clear picture of the health and performance of your network, tools like ATLAS can be very helpful. ATLAS is an advanced diagnostic station for industrial Ethernet, equipped with a powerful processor and generous memory. By both passive and active monitoring of your network, ATLAS collects valuable statistics that are invaluable when troubleshooting and maintaining industrial networks.

- Visualize the network topology
- Monitor firmware updates
- Analyze maximum port load over time on your device

These are some of the features that make ATLAS an indispensable tool for optimizing your PROFINET network and taking it to the next level.

Contact Adeptor to learn more and get a demo online or in your Industrial environment, [Read more](#). Or contact:

# ADEPTOR



## NETLink PRO Compact från MWA

Do you want to make old and existing systems network-compatible? Then NETLink PRO Compact is particularly suitable.

The Ethernet gateway is connected directly to the interface of the PROFIBUS/MPI participant and therefore no additional space in the control cabinet.

[Read more](#).



- NETLink PRO compact-The plug-in network connection
- Easy to connect onto the CPU MPI/PROFIBUS
- Without changing the program
- No conversion of the control unit
- Direct integration into engineering tools
- The Ethernet gateway can be supplied externally with 24 V

[Are you a member of PI Sweden?](#)

Is your company a member? If not, click [here](#) and register.

As a member you have great advantages.

If you have products or services for PROFIBUS/PROFINET, you can present your company and your products on our website and in the international product guide.

Do you want technical documentation, you get a login and a password for the international website download page.

You can find more news about PROFINET, PROFIBUS, IO-Link and more at [SE.profibus.com](http://SE.profibus.com) and in [PROFInews](#)

*Merry Christmas and a Happy New Year*

PI Sweden

